



MY23 Z Product Video Location Scouting

Oct 25, 2021

Content Outline

Features

LAUNCH

- Twin Turbo Engine
- Launch Control
- Clutch-type Limited-slip Differential
- Sport Gauges w/ Shift Light
- Driver's seat cut outs
- Reinforced 1st and 2nd gear synchros
- Performance Brakes
- 6-speed manual with Synchro Rev Match

CORNER

- SynchroRev Match
- Electric-assist power steering
- Built-In Knee Pad
- Bolstered seat with anti-submarine pad
- Lightweight components, with monotube shocks
- 19" forged alloy wheels and performance tires
- 50/50 Dynamic Weight Balance

NIGHT CRUISE

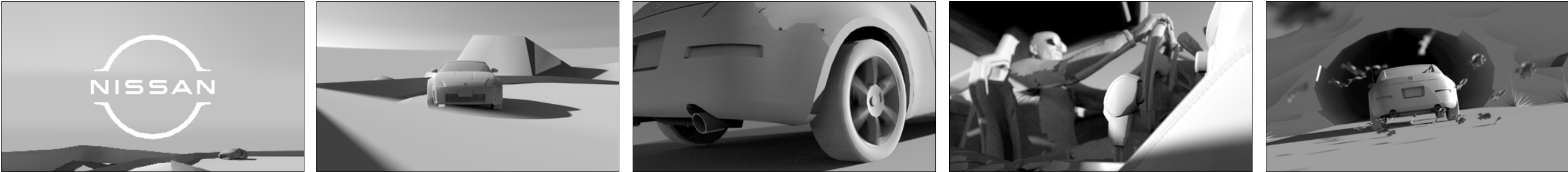
- Long Nose
- 240Z-Inspired Headlights and Grille
- 300 ZX- Inspired Taillights
- Katana Blade Finisher
- 2-Tone Exterior
- Iconic Triple Pod Cluster
- Touch-Sensitive Steering Controls
- Driver-Selectable Digital Gauges
- 9" touch-screen w/Android Auto
- Bose Premium Audio System



[Z MOMENTS]

LAUNCH





NOTES:

Angeles Crest highway (considered one of the most beautiful drives in Southern CA) is a great option with a good road surface and a unique alpine feel. It features several options for turnouts, as well as a very unique double tunnel. Some turnouts do have doughnuts on ground from other drivers - will be visible if we use those.

ANGELES CREST - HWY 2

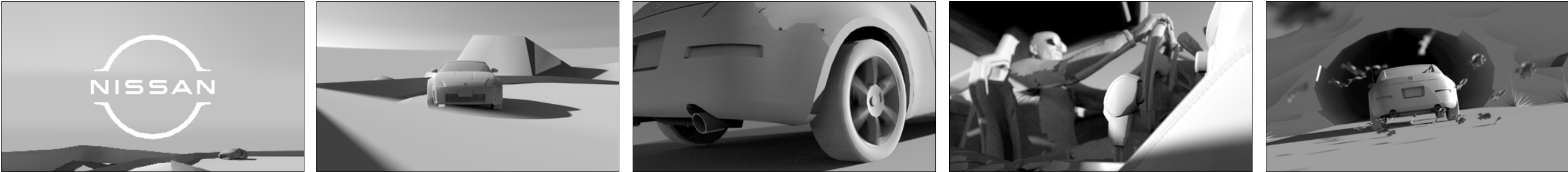
- Unique double tunnel
- Great alpine look and feel
- Straight and curved sections
- Above snow line - Good chance of snow in mountains - but closure risk.

[Drone Scout](#)

[Road and Tunnel POV](#)

[Hero PAD](#)





SOLEDAD CANYON ROAD

- Lacks a paved turnout for beginning shots
- Single shorter tunnel & Bridge
- Straighter overall with a desert look
- Power lines will be problematic

NOTES:
Recommended as a backup to Angeles Crest highway in the case of snow. This location features a straighter road with good vanishing points, a smaller tunnel, and a bridge. This location does not have a paved turnout for the opening - power lines could be problematic in framing.

[Road and Tunnel POV](#)



[Z MOMENTS]

CORNER





NOTES:
HWY 39 runs from the base of the mountains all the way up to 7000+ feet. It's a good long road with many options for horseshoe turns, depth, and scenic views. In line with our concept, it's a known road that local car clubs and driving enthusiasts enjoy driving.

- HWY 39**
- Known drivers road - fits with concept
 - Multiple horseshoe turns
 - Good road surface
 - Nice counterpoint to Launch roads

[Drone Scout](#) [Road POV](#)





- LITTLE TAJUNGA**
- Condensed section of sharp turns
 - Good views
 - Road surface is in disrepair
 - Nice counterpoint to Launch roads

NOTES:
Little Tajunga is a nice canyon road with a great winding switchback section that has nice views down the canyon, the back side of the peak the road climbs has good straightaways, and softer turns. The road surface is not as nice as HWY 39 and it's surrounded by taller peaks that could limit the full day light window.

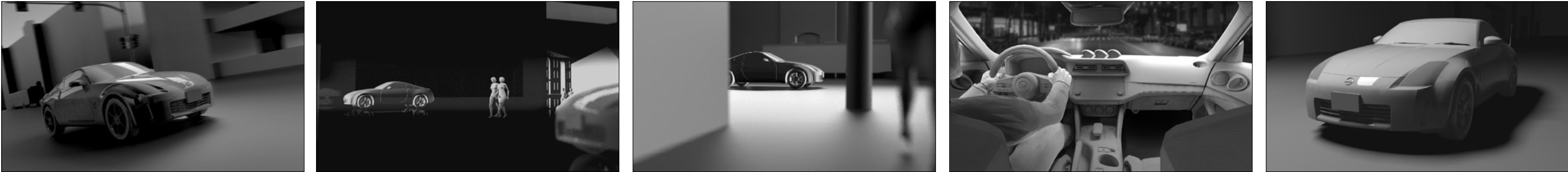
[Drone Scout](#) [Road POV](#)



[Z MOMENTS]

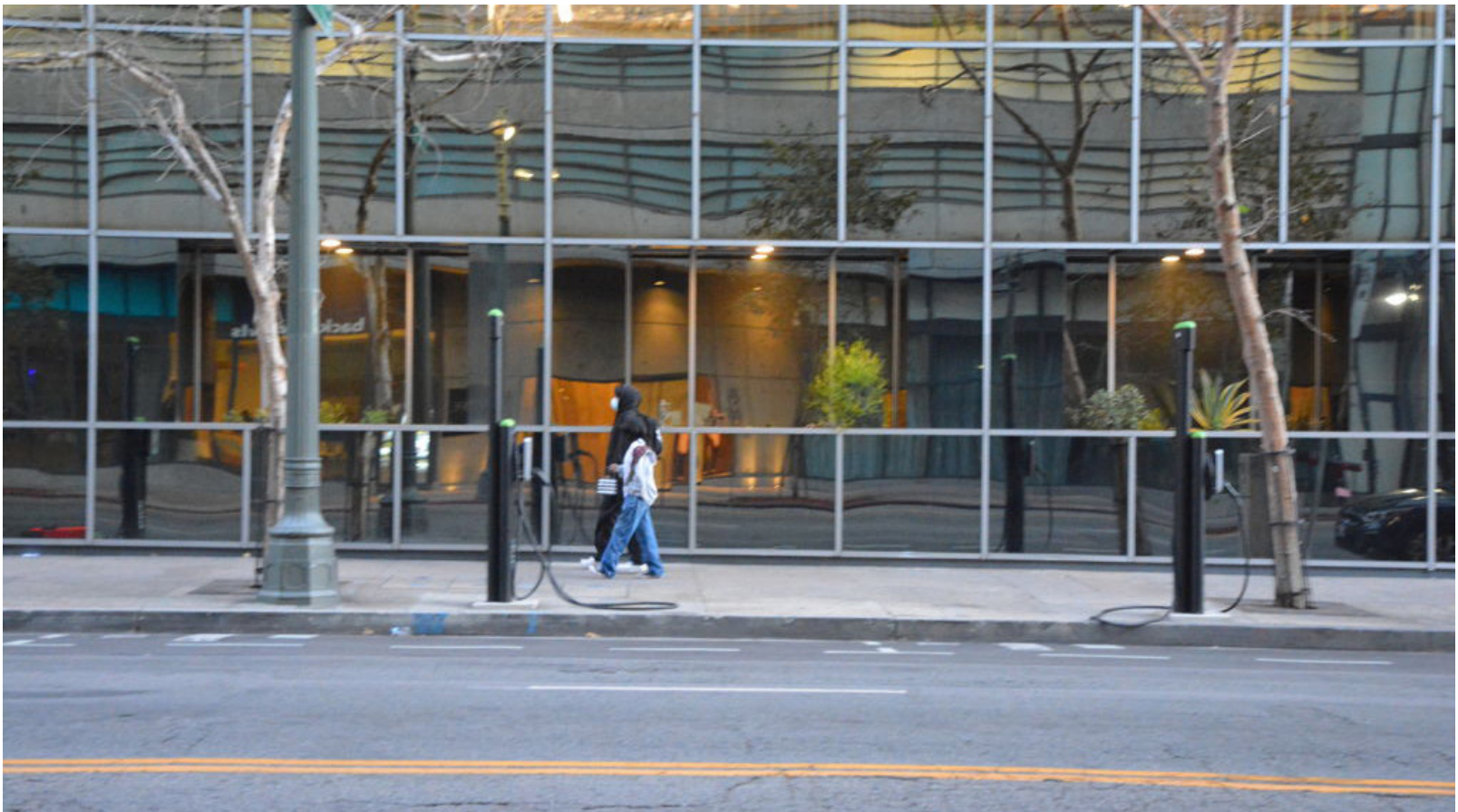
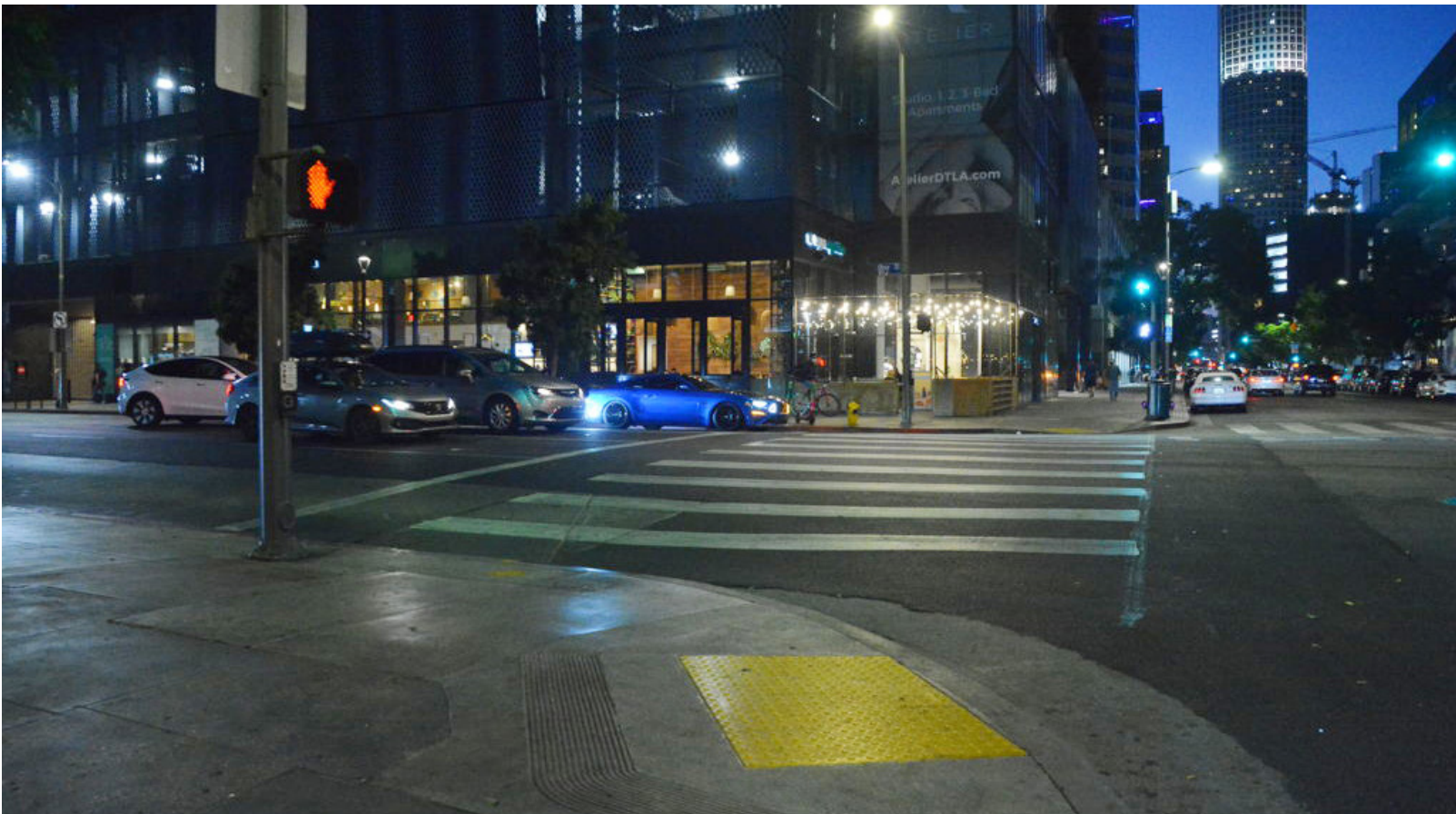
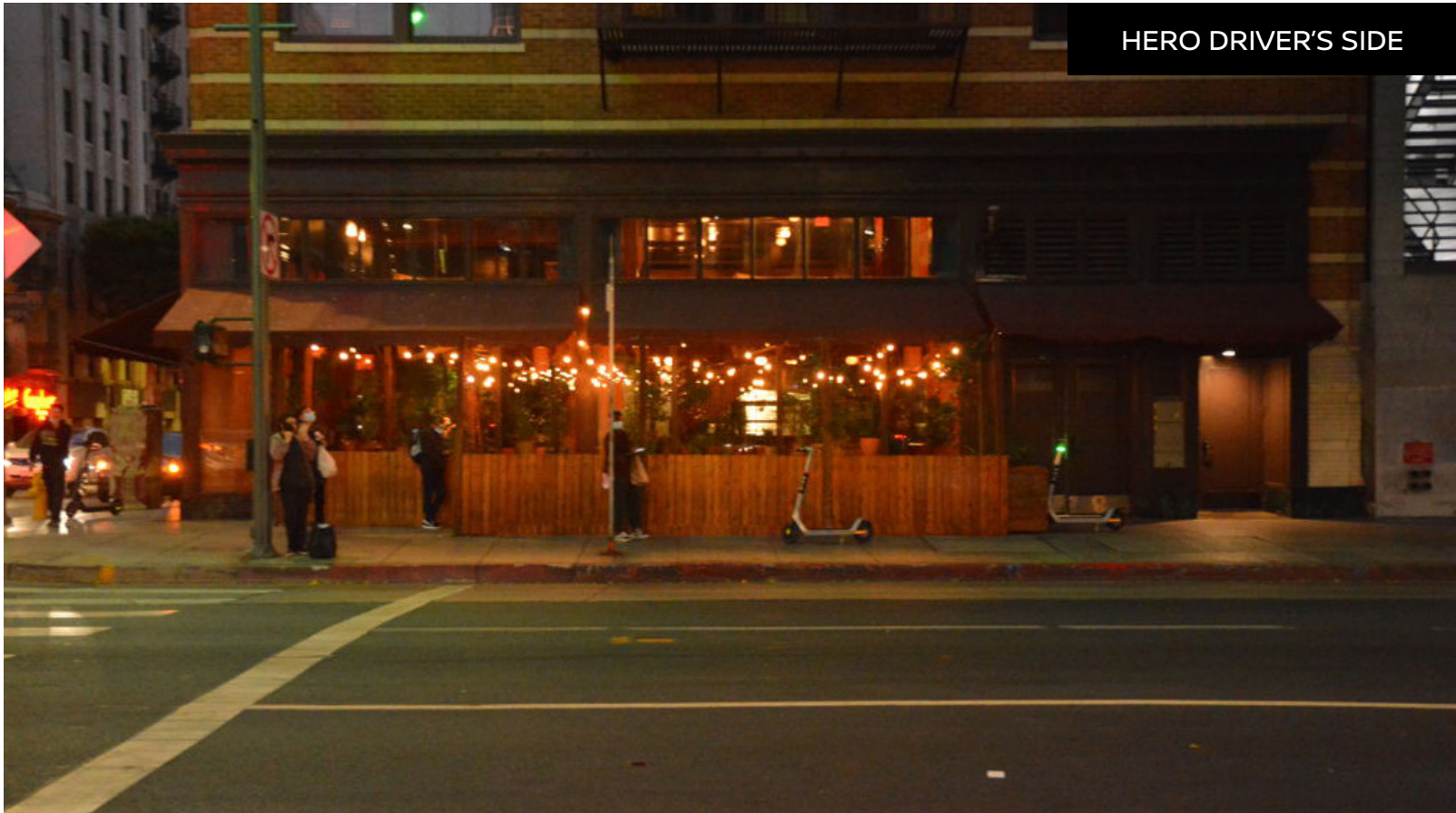
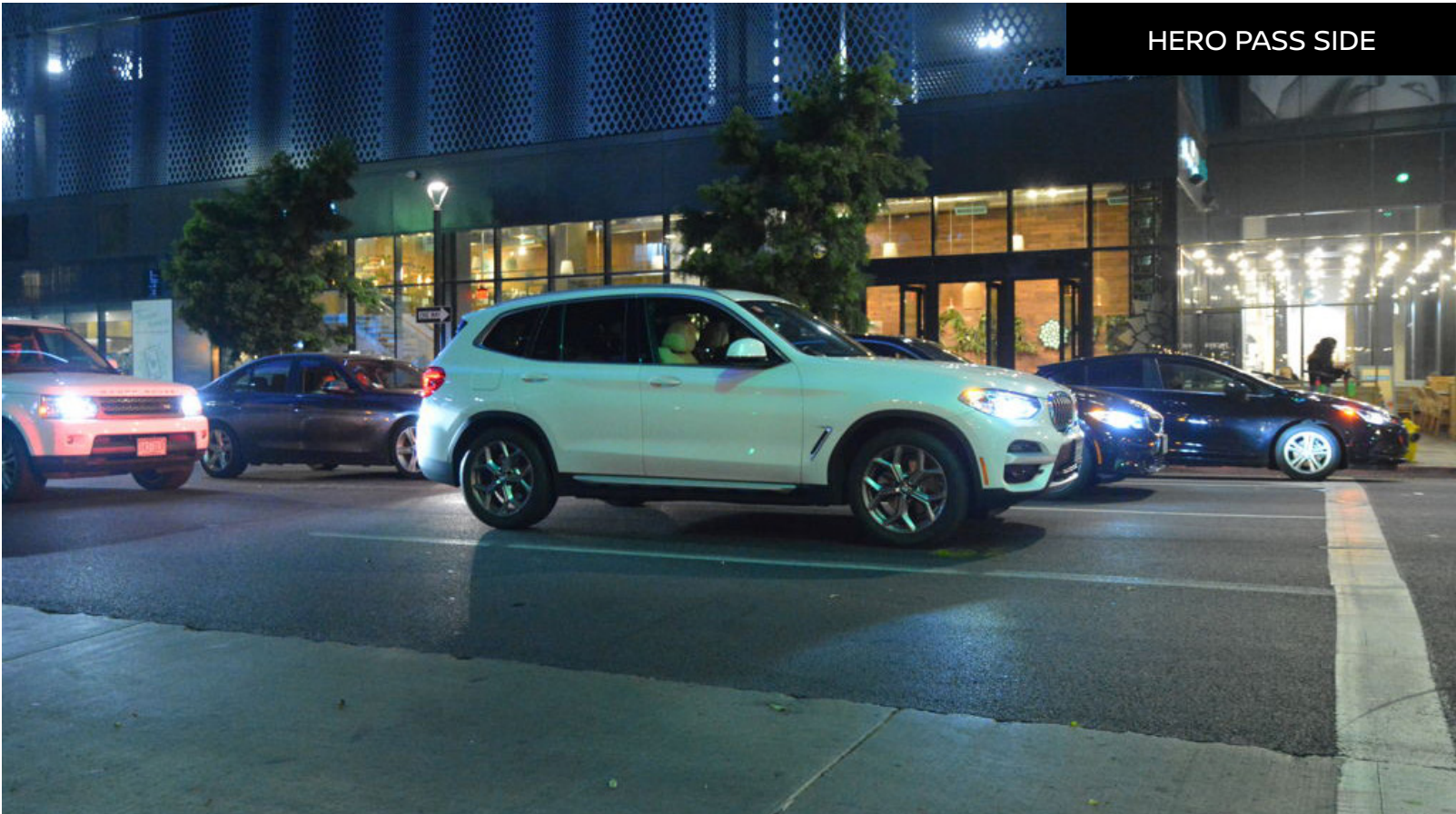
NIGHT RIDE





NOTES:
A good intersection that works for 360 degree shooting, the buildings look nice in almost any direction. There are several banks of large glass windows in the vicinity that should be good for our reflection shot. We'll identify the best on the tech scout.

- OLIVE & 8TH**
- Only Good 360 Intersection
 - Nice modern buildings
 - Feels like an active nightlife area



APPENDIX



LOCATION SPECS - LAUNCH



- NOTES:**
- Relatively straight road - this is an acceleration story.
 - Good depth in background - not a tight canyon with limited views.
 - Features a good sized paved turnout for opening sequences.
 - Features a tunnel either on road - or on a nearby road within reasonable distance.
 - Road surface in good repair free of large potholes or tar lines.
 - Car color is yellow and will need to separate from background.

LOCATION DESCRIPTION:

This road is a relatively straight road that might be a scenic lookout road, or a road with soft rolling hills or scenic mountains in the background. It's views are open so the shots have depth - it is not a tight road in a canyon or a road through a heavily wooded area. This road has a large paved turnout - ideally a scenic vista - and a tunnel. It should have at least two lanes - ideally with shoulders for Russian arm work. If this combination is not available in one road, then we'll need several roads in a close proximity that have these features. Ideally the posted speed limit should be above 45, so we don't have legal concerns about speed / speeding.



LOCATION SPECS - CORNER



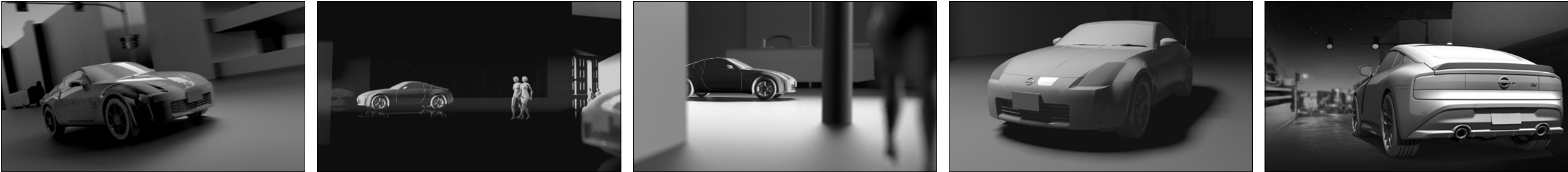
- NOTES:**
- Curvey road featuring at least 1 prominent sweeping horseshoe turn.
 - Good depth in background - not a tight canyon with limited views, needs draw.
 - 2 lanes minimum for arm car work - paved shoulders a plus.
 - Consider traffic level - will need to give us ample shoot time.
 - Road surface in good repair free of large potholes or tar lines.
 - Car color is yellow and will need to separate from background.

LOCATION DESCRIPTION:

This is a winding road that might be a scenic lookout road, or a road with soft rolling hills or scenic mountains in the background. It's views are open so the shots have depth - it is not a tight road in a canyon or a road through a heavily wooded area. In addition to being winding it needs to feature 1 sweeping horseshoe style turn. It should have at least two lanes - ideally with paved shoulders for Russian arm work. Ideally the posted speed limit should be around 45, so we don't have legal concerns about speed / speeding. Be mindful of areas with lots of dead grass - our car is yellow and we want separation from environment.



LOCATION SPECS - NIGHT DRIVE



- NOTES:**
- Hero car spends a lot of time parked in an intersection - consider traffic levels.
 - Relatively simple modern / contemporary architecture.
 - Feels like a shopping / eating / nightlife area - not deserted or remote.
 - Good ambient light to help light the car.
 - Road surface in good repair free of large potholes or tar lines.

LOCATION DESCRIPTION:

This is an area of the city that feels like a shopping district / eating area - does not have to feel like city center with highrises. It features good levels of ambient light to help light the car. It will need an intersection where the car can be parked at a stop light for a significant amount of time - so we'll need to consider traffic flow, and congestion. It will also need at least a block to do running shots of the car. This could be like a private shopping area like The Row DTLA, or Victoria Gardens but it doesn't need to be. We will need to be mindful of high levels of proprietary signage in the area that would need to be removed in post.



Thank you